

ADC-11 | C Compiler, Assembler, Simulator Package

AVOCET DEVELOPMENT TOOLS

The ADC-11 Compiler, Assembler, Simulator Package, including the popular Windows IDE (WIDE) is all you need to write, edit, compile, and debug your 68HC11 code. If you are looking for a robust, affordable development package for the 68HC11, look no further. Backed by over 20 years of experience developing and supporting embedded systems development tools, you can be sure that we can help you get your 68HC11 project done on-time and under-budget.

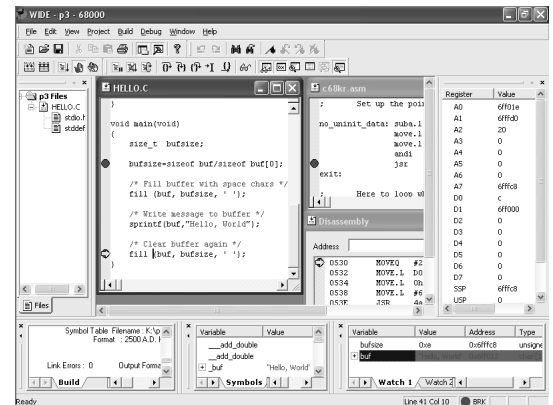
IDE Features

- Automatic listing of in-scope variables in watch window
- Chip selection for popular 68HC11 derivatives
- Improved documentation. Fully indexed, searchable, and printer-friendly help.
- Simulator allows editing of variable values during debugging for "what if" testing
- Fully customizable User Interface (ex: Create a custom toolbar for frequently used commands)
- Custom watch variables
- Intuitive Port I/O support
- High-level debugging: step-in, -out, and -over
- Assembly-level / machine code stepping
- Switch between low-level and high-level debug mode
- Unlimited source file size
- Single click to: make, build, break, step, run
- Project build options are easy to set using intuitive dialogs
- Project saving
- Windows are re-opened for projects
- Standard editor features: color contexting, goto line, cut, copy, paste, search, replace



Complete Solution for Your 68HC11 Project

ADC-11 is part of our Complete Solution for the 68HC11, which also includes the very popular HMI-200-68HC11 in-circuit emulator. Seamless integration means no more headaches trying to get your software and hardware tools to work together. Finally a single source for your tools... development, sales, and technical support from ONE company.



C Compiler Features

- C interrupt support
- In-line assembly
- Generates assembly listings
- Reentrant banking support
- 32-bit and 64-bit floating point
- Macro support with parameters

Assembler Features

- 248 levels of nested conditions
- Generates relocatable code
- Linker supports 32-bit addressing

Simulator Features

- Automatic error detection of stack overflows and underflows as well as out of range memory reads and writes
- Full Source Level Support
- Memory & address breakpoints
- Full interrupt simulation
- File, Port or Keyboard I/O simulation
- Viewable Program Trace
- Reverse Program Stepping

Some simulator features available in DOS mode only

The Complete Solution for Embedded Systems Development Tools



Avocet Systems, Inc.
120 Union Street
P.O. Box 490
Rockport, ME 04856

View All Our Tools At:
www.avocetsystems.com
Email Us to Request a Quote:
sales@avocetsystems.com

Phone (800) 448-8500
(207) 236-9055
Fax (207) 236-6713

WIDE (Windows Integrated Development Environment) for ADC-11

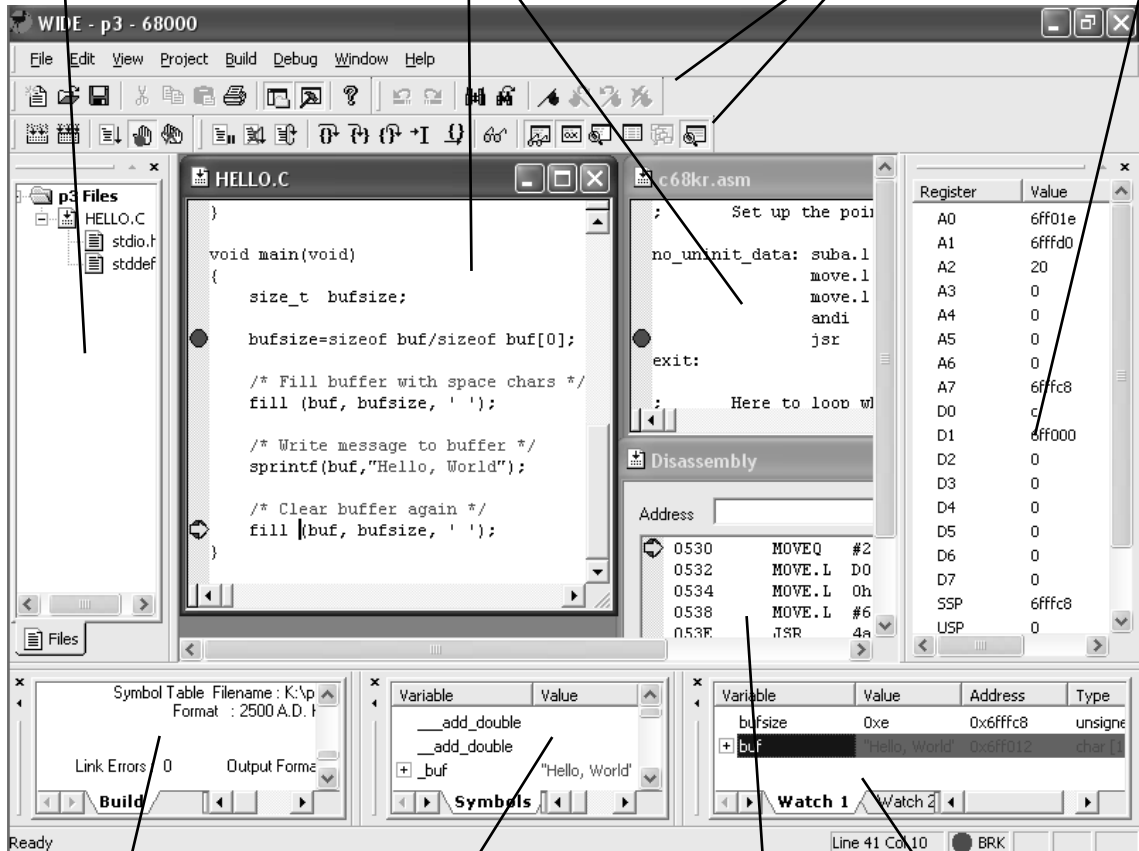
AVOCET DEVELOPMENT TOOLS

Project Window keeps your project files easily accessible for opening and editing. Right click to add or delete files from your project.

Source Windows for source editing and visual debugging. Step, set breakpoints, and run to cursor in this window. Color contexting of keywords, strings, and comments

Customizable interface: docking toolbars, add/delete toolbar buttons, or create your own custom toolbar with the commands you use most often.

Registers Window



Build Output Window shows build status information. Double click on errors to jump to error in source code.

Symbols Window automatically displays values of globals and locals. Right click on value to switch between decimal and hex display

Disassembly window automatically shows disassembled source for low-level debugging

Watch Window allows adding of custom watches and editing of watches "on the fly"

The Complete Solution for Embedded Systems Development Tools



Avocet Systems, Inc.
120 Union Street
P.O. Box 490
Rockport, ME 04856

View All Our Tools At:
www.avocetsystems.com
Email Us to Request a Quote:
sales@avocetsystems.com

Phone (800) 448-8500
(207) 236-9055
Fax (207) 236-6713